

The Cultural Commons
An Interactive Garden and Education Space

Donation and Pledge Form

Donor Information (please print or type)

Name _____
Address _____
City, ST Zip Code _____
Phone _____
Email _____

Pledge Information

I (we) pledge a total of \$ _____ to be paid: now monthly quarterly yearly.

I (we) plan to make this contribution in the form of: cash check credit card other.

Credit card type | Exp. date _____

Credit card number _____

Authorized signature _____

Gift will be matched by (company/family/foundation) _____

form enclosed form will be forwarded

Acknowledgement Information

Please use the following name(s) in all acknowledgements: _____

In Honor of/In Memory of: _____

I (we) wish to have our gift remain anonymous.

Signature(s)

Please make checks, corporate matches,
or other gifts payable to:

Date

Cultural Commons Fund
Central Wisconsin Community Foundation
1501 Clark Street
Stevens Point, WI 54481

Please see P. 2 for Paver and Bench options

Donation Paver
 DIMENSIONS
 18" x 18" x 2"

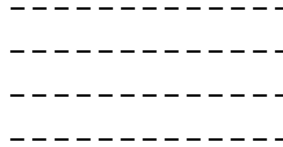
MATERIAL:
 Concrete
 SHAPE:
 Square

ADDITIONAL FEATURES:
 Custom Engraving

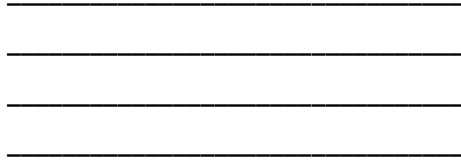


DONATION COST: \$600

Text engraved on paver (15 characters per line, 4 lines max.)



Bench Recognition text



Sponsorship Plaques

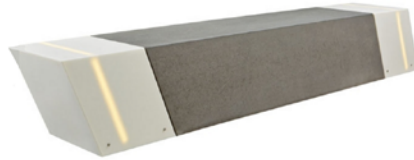
Design features of the park can be given special sponsorship recognition to a single donor or organization. Other major contributors will be listed on an entry park sign.



Slant

DIMENSIONS
 113 5/16" x 18" x 18"
 WEIGHT:
 2150 lbs. lbs.
 MATERIAL:
 Concrete
 SHAPE:
 Rectangle
 REINFORCEMENT:
 Yes
 ADDITIONAL FEATURES:

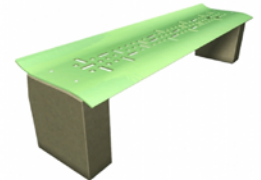
Optional LED Lumen Strip Lights, Engraving Included



DONATION COST: \$7000

Bench Seat

DIMENSIONS
 72" x 18" x 16"
 WEIGHT:
 345 lbs. lbs.
 MATERIAL:
 Concrete/Steel
 SHAPE:
 Rectangle
 REINFORCEMENT:
 Yes
 ADDITIONAL FEATURES:
 Engraving Included, color options.



DONATION COST: \$5000

Nest

DIMENSIONS
 142" x 125 11/16" x 30 5/8"
 WEIGHT:
 10,230 lbs.
 MATERIAL:
 Concrete
 REINFORCEMENT:
 Yes
 ADDITIONAL FEATURES:
 Engraving Included



DONATION COST: \$8000

Cantilever Metal

DIMENSIONS
 72" x 18" x 33"
 WEIGHT:
 660 lbs.
 MATERIAL:
 Steel
 REINFORCEMENT:
 Yes
 ADDITIONAL FEATURES:
 Engraving Included, Seat and prop colors may differ



DONATION COST: \$5000

Star

DIMENSIONS
 75" x 75" x 16"
 WEIGHT:
 2300 lbs. lbs.
 MATERIAL:
 Concrete
 REINFORCEMENT:
 Yes
 ADDITIONAL FEATURES:
 Engraving and Anchoring Kit Included



DONATION COST: \$6000

Lounge Chair and Bench Fold

DIMENSIONS
 Seat: 36" x 28" x 32"
 Bench: 72" x 18" x 16"
 WEIGHT:
 150-200 lbs.
 MATERIAL:
 Powder Coated Steel
 ADDITIONAL FEATURES:
 Color Options, Signage and Anchoring Kit Included



DONATION COST: \$6000

Examples of wording ideas for memorial recognition plaques:

We will forever miss our dear friend..... Remembering..... In grateful recognition and or appreciation....

- whose dedication and commitment was unsurpassed
- the impact you made here will be felt for many generations
- time will never erase the work you have accomplished here and the lives you have positively affected